



Focus Group Meeting #2

Airport Connectivity/Mobility
September 19, 2019

Focus Group

Housekeeping

Involvement:

- The Focus Group will be the deliberating body.
- Questions will be taken from observers as appropriate and timely.

Focus Group Member participation:

- Use of name tents.

Website:

- Focus Group and other advisory groups will have their own webpages.
- All meeting dates will be posted so that others and public can attend if desired.
- Data related to the task at hand will be placed under their particular headings.
- Support data (general) still remain on the web where it resides today.

Focus Group

Our Guardrails

What's **not** our Mission?

- To solve the entrance to Aspen nor the light rail debates.
- To recommend improvements that fall outside the EA clearance.
 - *Work within the constraints of the Airport property.*

What **is** our mission? Visioning not designing. The strategic questions:

- **How can we improve airport connectivity?**
 - *What would more convenient and easy ground transportation to and from the airport look like (for commercial and general aviation)?*
 - *How can we enhance multi-modal transportation options and create seamless connectivity to transit?*
 - *How does the Airport fit into the broader regional surface transportation network?*
- Stay true to the agreed upon Quality of Life and Environment targets.
- Stay true to the shared common community values across all working groups.

Focus Group

Process: *Steps leading up to a November Recommendation:*

- **Meeting 1 (Aug. 28): Establish a Baseline and Goal Setting.** Panel of local transportation and mobility experts. Identify shared goals and priorities.
- **Meeting 2 (Sept. 19): Develop priorities for Airport/Transit Connectivity.**
- **Meeting 3+ (Oct. 2): Explore Airport/Transit Connectivity.** Discussion based on values and priorities developed in Meeting 2.
 - **Aligning, formalizing and voting on recommendations.** Answering strategic questions – what does success look like for airport connectivity?
 - Report out to Airport Vision Committee Nov. 13

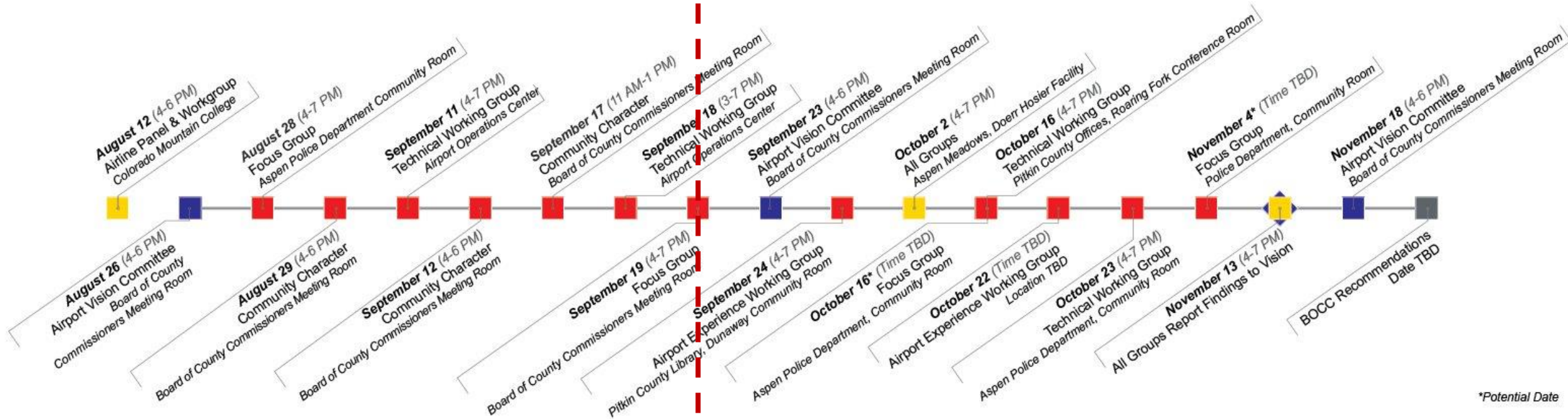
Focus Group

Meeting #2 – Agenda (4-7pm)

Mission – How does the Airport fit into the broader regional surface transportation network?

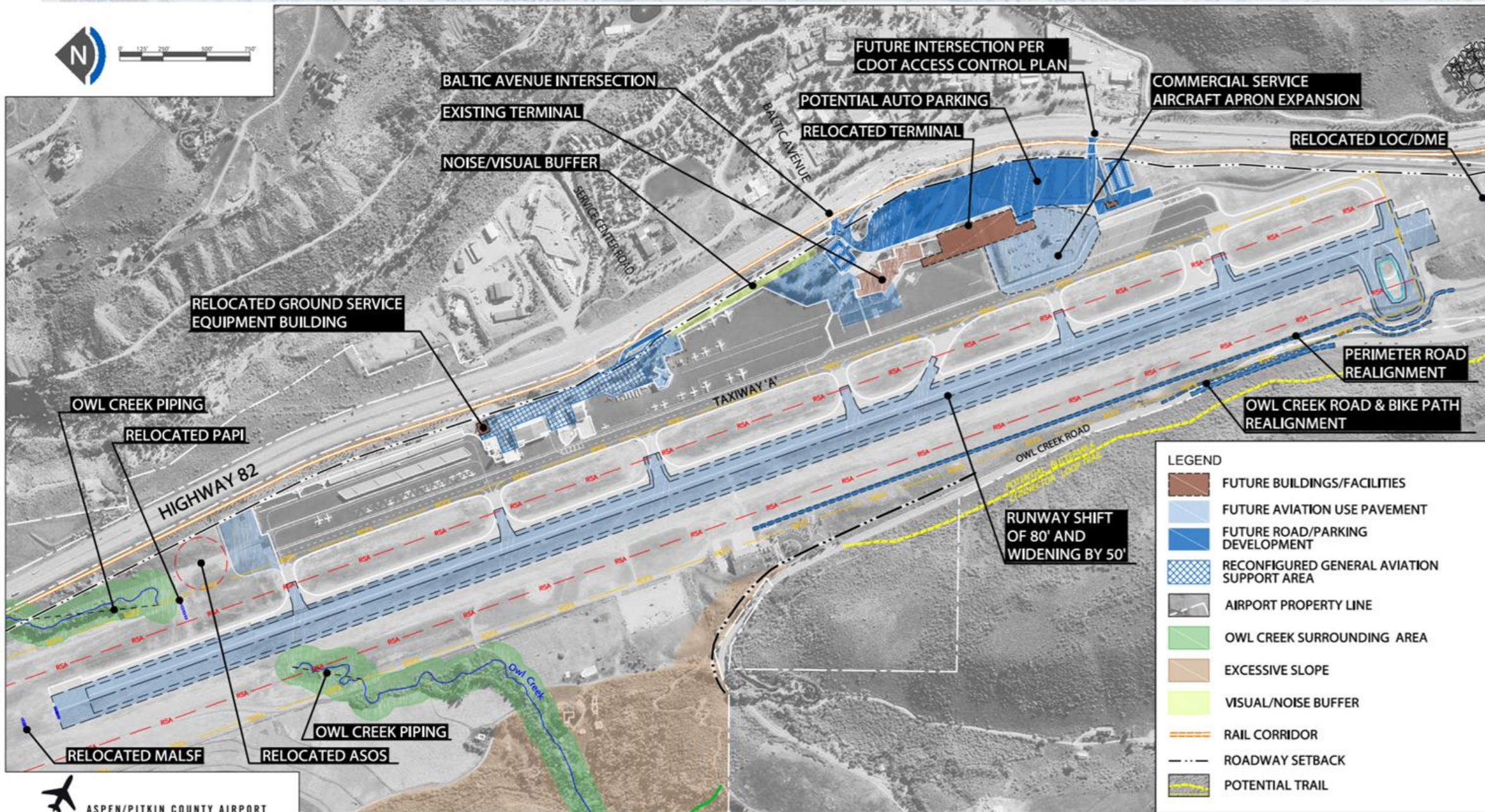
- Meeting #1 follow-up, polling results and additional data – *30 minutes (4:30)*
- Innovative ground transportation examples from other airports – *45 minutes (5:15)*
 - Miami, Charlotte, Burbank
- Prioritize and evaluate ground transportation options by mode – *90 minutes (6:45)*
- Next meeting dates and path forward – *15 minutes (7:00)*

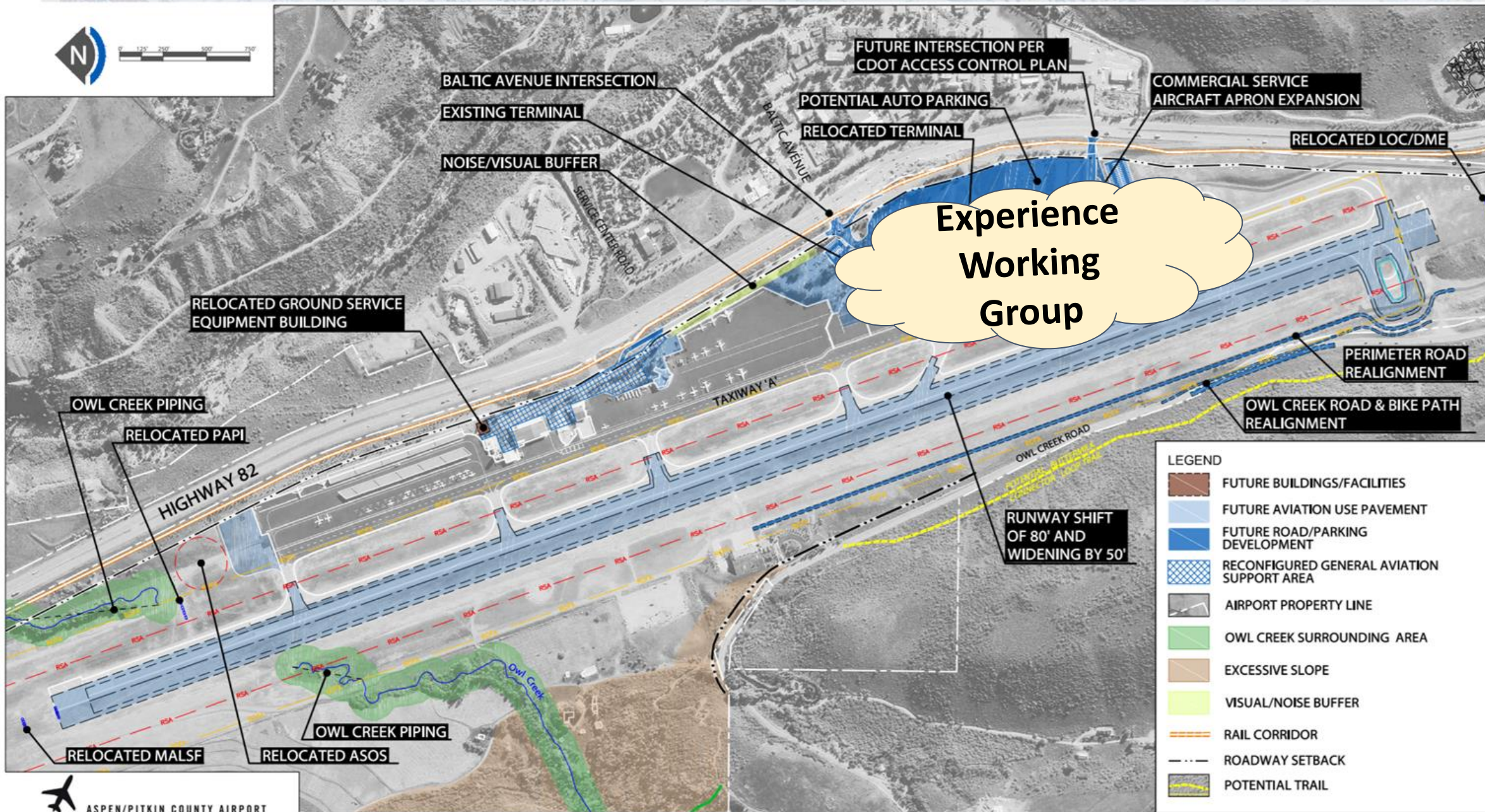
Tentative Process Timeline

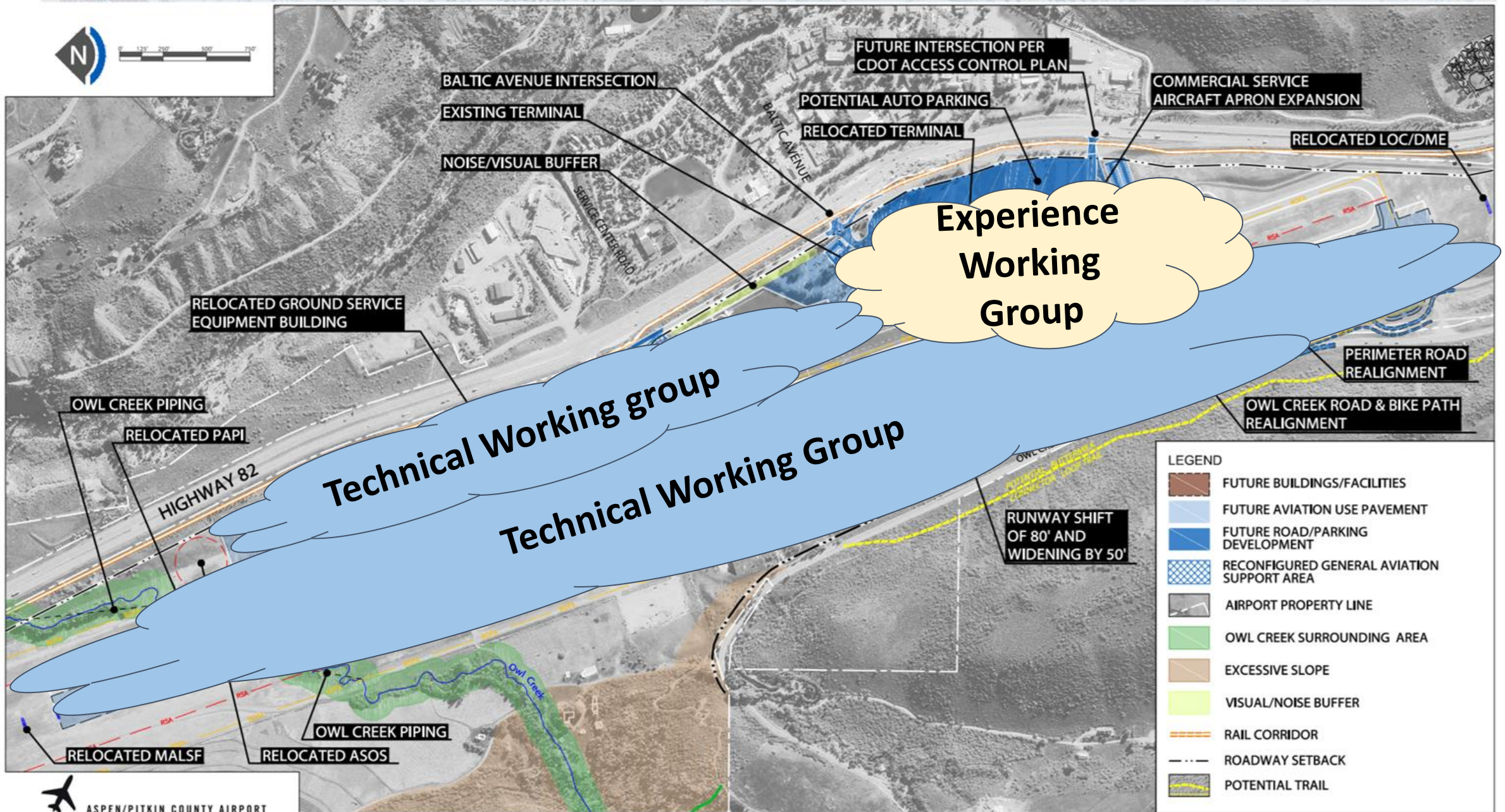


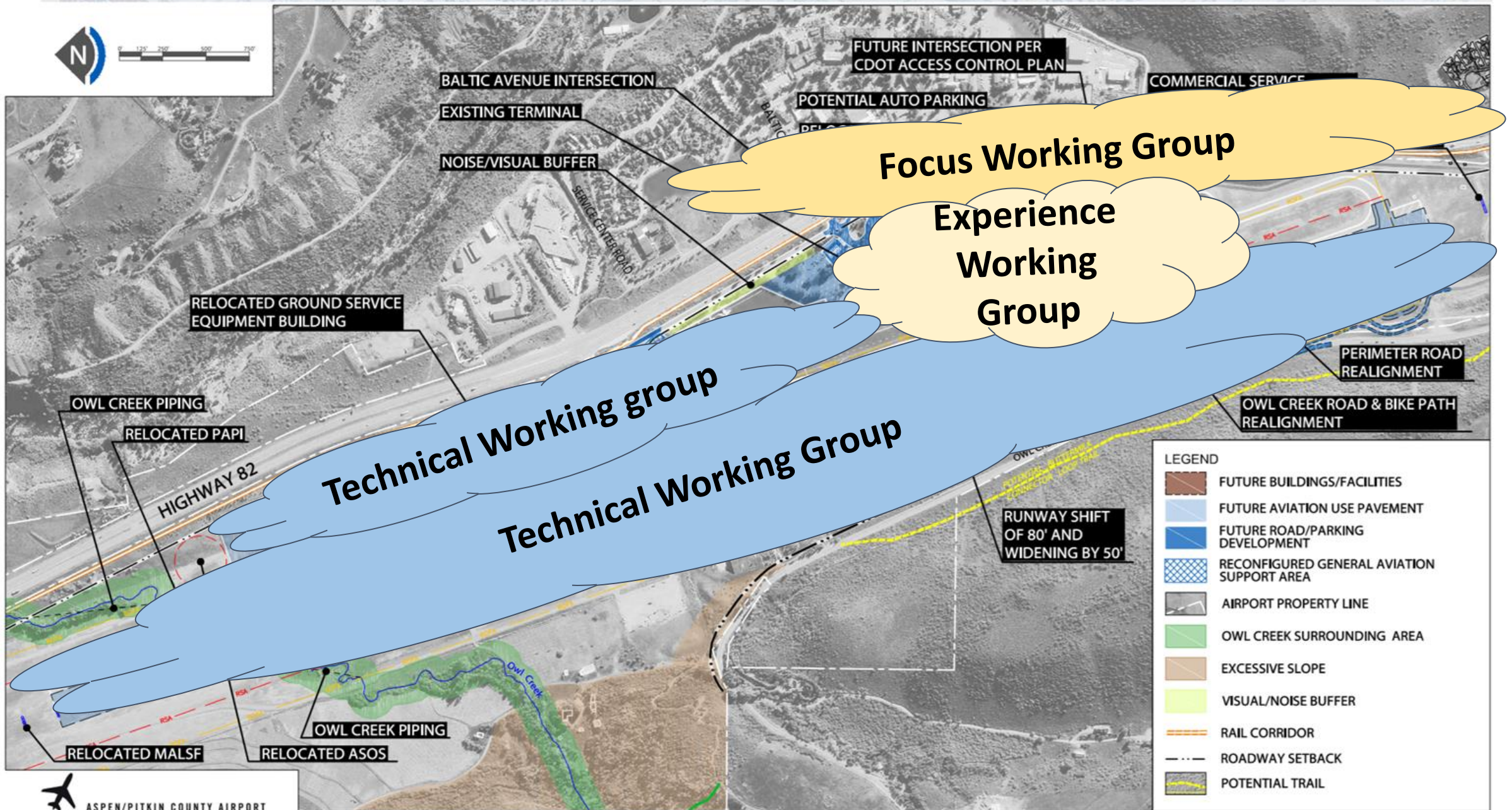
*Potential Date

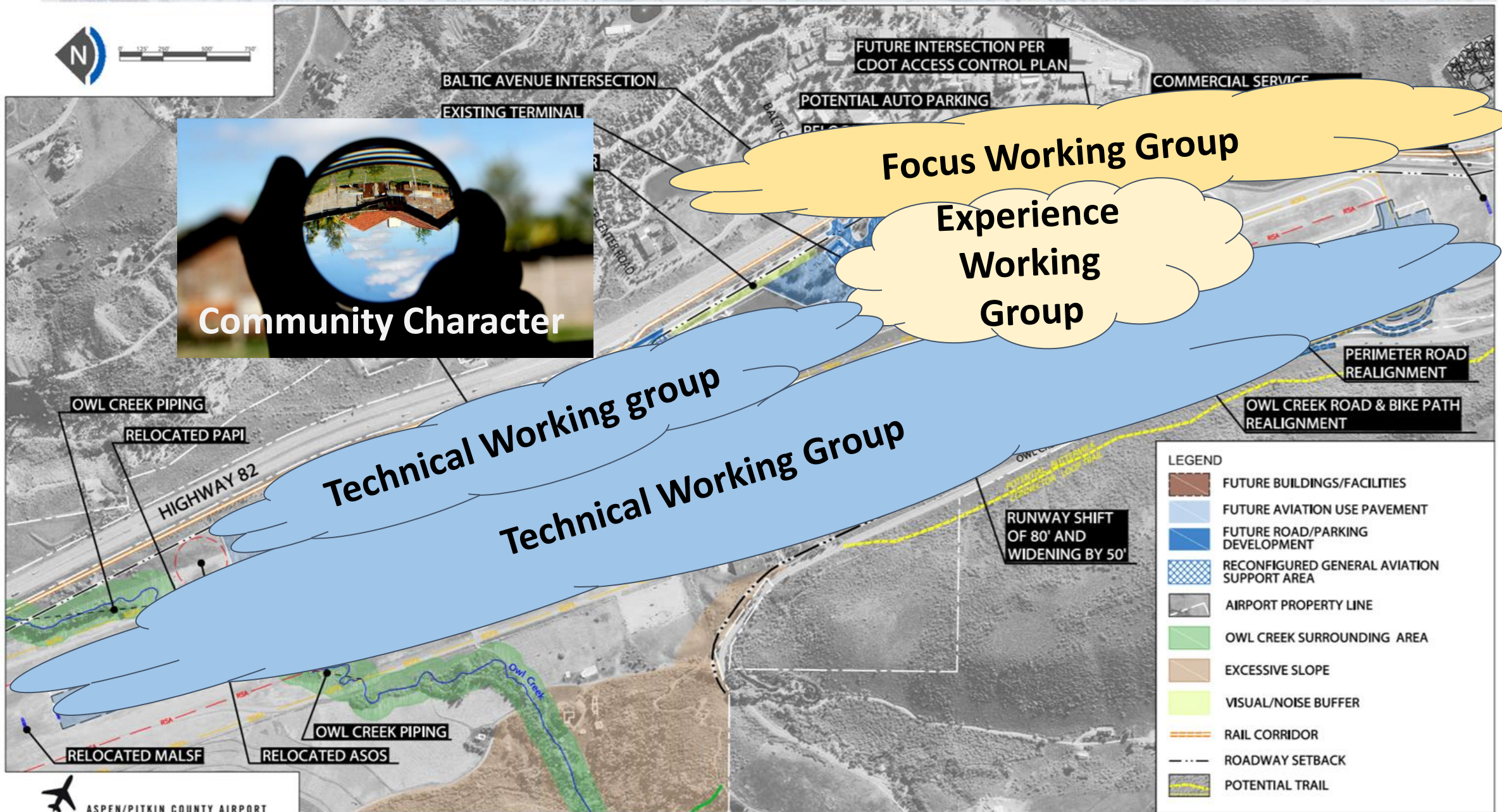
We are here











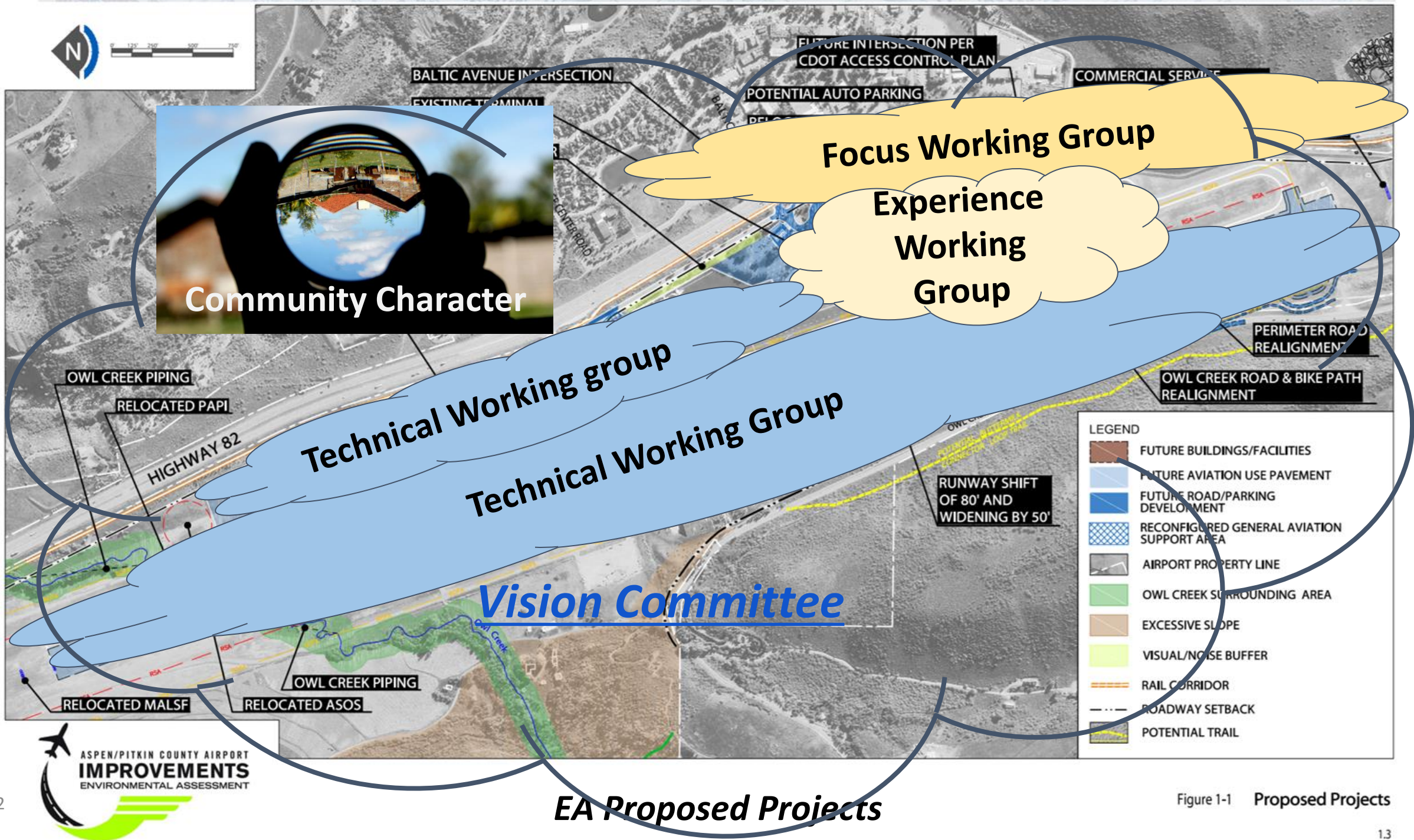
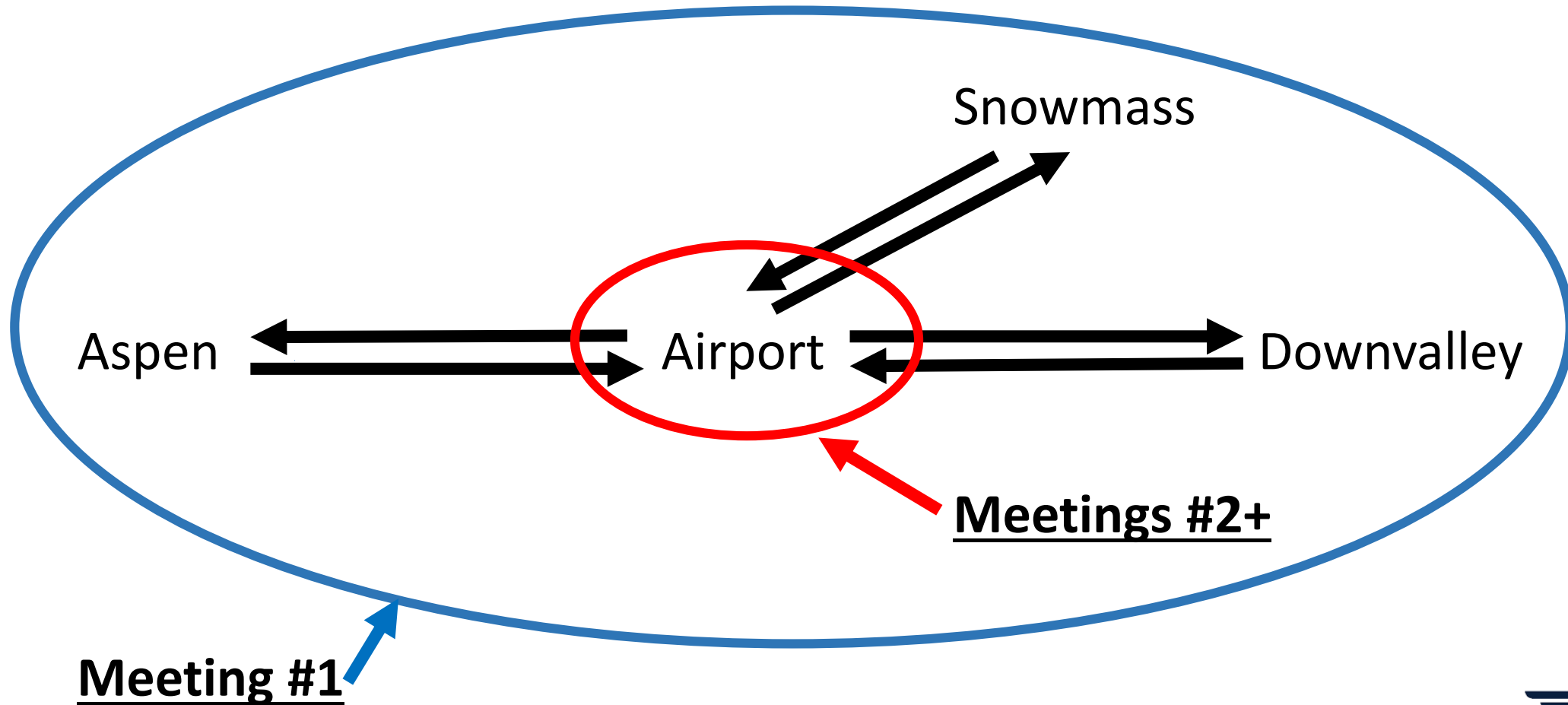


Figure 1-1 Proposed Projects

Focus Group



Guiding Principles

- Reduce overall airport emissions (aircraft & facilities) by 20-30%
[Target for Overall Airport Emissions]
- Reduce noise levels by 20-30%
[Target for Airport Noise Intensity]
- Accommodate limited growth
[Commercial Enplanement Target of .8%]

ASE COMMUNITY VALUES SUMMARY

- Safety in the Air and on the Ground
- Adaptable, Flexible, Future-Proof
- Environmental Responsibility
- Community Character – Reflect local culture and values
- Economic Vitality
- Warm and Welcoming
- Design Excellence
- Efficiency – an airport that works well
- Preserve High Quality of Life
- Convenient and Easy Ground Transportation

Ground Transportation and Community Values

Sticky dot exercise #1:

Identify the top three modes that best meet our values (3 green dots)

Ground Transportation and Community Values

Mode	Best Meets Our Values
	Noise/Emissions/Growth
Mass Transit	
Multi-Modal (ped/bike)	
Hotel Shuttles	
Ride Sharing (taxi/Lyft/Uber)	
Private Vehicles/Parking	
Rental Vehicles/Parking	

Focus Group

Meeting #2 – Objectives

- Review Meeting #1 polling:
 - How can we improve airport connectivity?
- Review innovative ideas from other airports
- Prioritize and evaluate ground transportation options by mode based on ASE Vision goals and values

Focus Group

Polling Results

- Meeting #1 polling: How can we improve airport connectivity?
 - What do you see as the single greatest opportunity?
 - What do you see as the single greatest challenge?

Focus Group

Polling Results: Summary of Opportunities

- **How can we improve airport connectivity: What do you see as the single greatest opportunity?**
 - Enhance weather-proof mass transit service to make it faster, more reliable and more attractive for users (e.g., BRT, airport shuttle, hotel vans, electric trains)
 - Encourage public transportation to reduce harmful greenhouse gasses and decrease automobile traffic
 - Building flexible parking facility/intermodal transit center that can adapt with future technology
 - Leverage easy access to major transportation corridor (Hwy 82)
 - Incentivize mass transit over private vehicular traffic and parking on airport grounds
 - Make the airport a mobility hub for regional transportation beyond plane travel
 - Better alignment of traffic flow under the Marolt

Focus Group

Polling Results: Opportunities

- **How can we improve airport connectivity: What do you see as the single greatest opportunity?**

1. Upgrade airport to allow mainline aircraft, which will not be subject to the pilot shortage at the regional airlines.
2. Getting the bus system to work for more arriving and departing passengers.
3. To have the opportunity do design a flexible airport that can change as the planes in the future change.
4. The chance to walk the talk of 'green transportation' and possible help reduce traffic load on Highway 82.
5. Making public transit convenient in the winter.
6. Enhance transit service to make it faster, more reliable, and more attractive for users: Use the existing BRT station on Highway 82, stop buses at the terminal doors, or create a designated airport transit shuttle. Options that use the BRT station would require some type of weather-protected connection to the terminal doors (e.g., covered and/or moving walkway).
7. Creating a network between the airport, Aspen, Basalt, and Snowmass Village that encourages the use of public transportation to reduce harmful greenhouse gasses and decrease automobile traffic.
8. The airport is located so close to the major transportation corridor (Hwy 82) that access is easy.
9. Best transport is Gant and other hotel vans
10. To foster greater use of environmentally-friendly regional mass transportation (based on BRT) by implementing scheduled shuttle service between ASE and down valley locations, Snowmass and Aspen, while simultaneously instituting disincentives for private vehicular traffic by limiting parking on airport grounds and increasing onsite parking fees. ASE's constricted footprint makes its scarce real estate almost too valuable to waste it on parking. Consequently, by moving ASE's parking to offsite locations that would be serviced by BRT (especially long-term, rental car and employee parking lots), a significant amount of ground area will become available for additional apron tarmac and the inevitable "second" expansion of the terminal 20-25 years down the road.
11. Make the airport a mobility hub for regional transportation beyond plane travel.
12. Aspen to Airport Direct busses or shuttles. Having to walk to the street and stand on the highway with ones luggage is a befitting welcome to Aspen.
13. Building a parking facility/intermodal transit center that will alleviate the parking/transport problems at KASE for the next 50 years.
14. Better alignment of traffic flow under the Marolt
15. Electric train into town connecting the airport. No cars or busses needed

Focus Group

Polling Results: Challenges

• **How can we improve airport connectivity: What do you see as the single greatest challenge?**

1. Pilot shortage at the regional airlines. Chip Child, CEO of Skywest Airlines warned congress of a “pilot shortage which will ground two thirds of the regional fleet”
2. Curbside service
3. The greatest challenge we face is that we have to try and make an airport that is functional and also not something that disrupts our town.
4. Currently and in the foreseeable future, the Aspen airport only has ONE road option leading to and from the airport.
5. Staging parking near the airport.
6. Parking -- both long- and short-term
7. Bureaucracy.
8. People who are resistant to change.
9. Avoiding stupid transport that has ruined and cluttered Aspen, instead work with the hotel vans and regular taxis.
10. The biggest challenge to realize the above goal is restricting the FG's recommendations to ONLY the EA's subject area. This constraint eliminates any near-term opportunity to develop offsite private vehicular parking for ASE that would have the positive effect of inducing greater use of BRT.
11. The city of aspen working together with the county and airport.
12. Getting people to take the bus.
13. Not enough time to do our job to investigate, evaluate, build consensus and report to the vision committee, lack of focus on the particular transportation needs of KASE, tendency to get distracted bells and whistles and to forget the fundamentals.
14. 4 lanes shrinking to 2 and the traffic congestion it creates
15. City government biased against novel thinking.

Focus Group

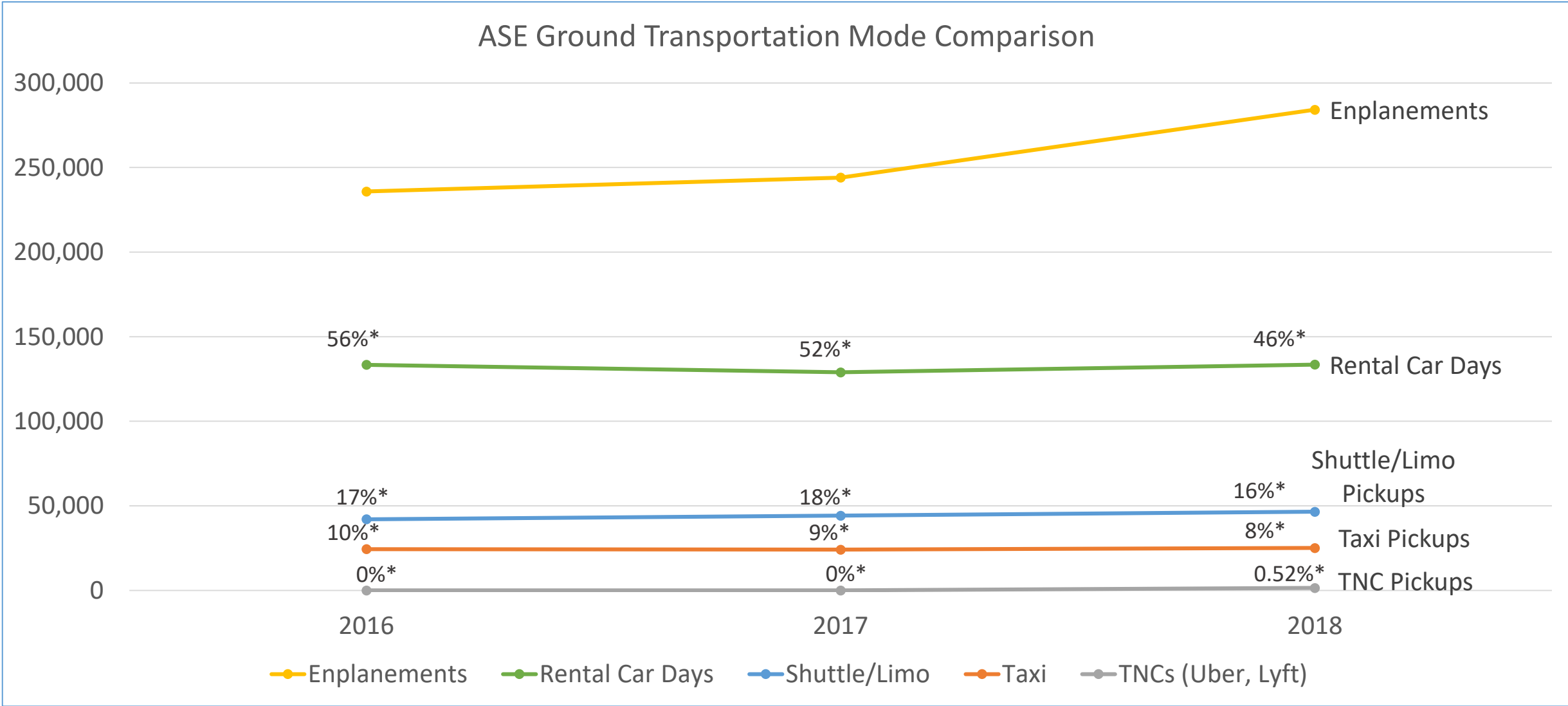
Summary of Additional Data, Questions and Comments

- Additional themes (questions/comments) from Focus Group members
 - Request for data on ground transportation mode choice for air travelers
 - Request for existing parking inventory and EA findings regarding parking

Focus Group

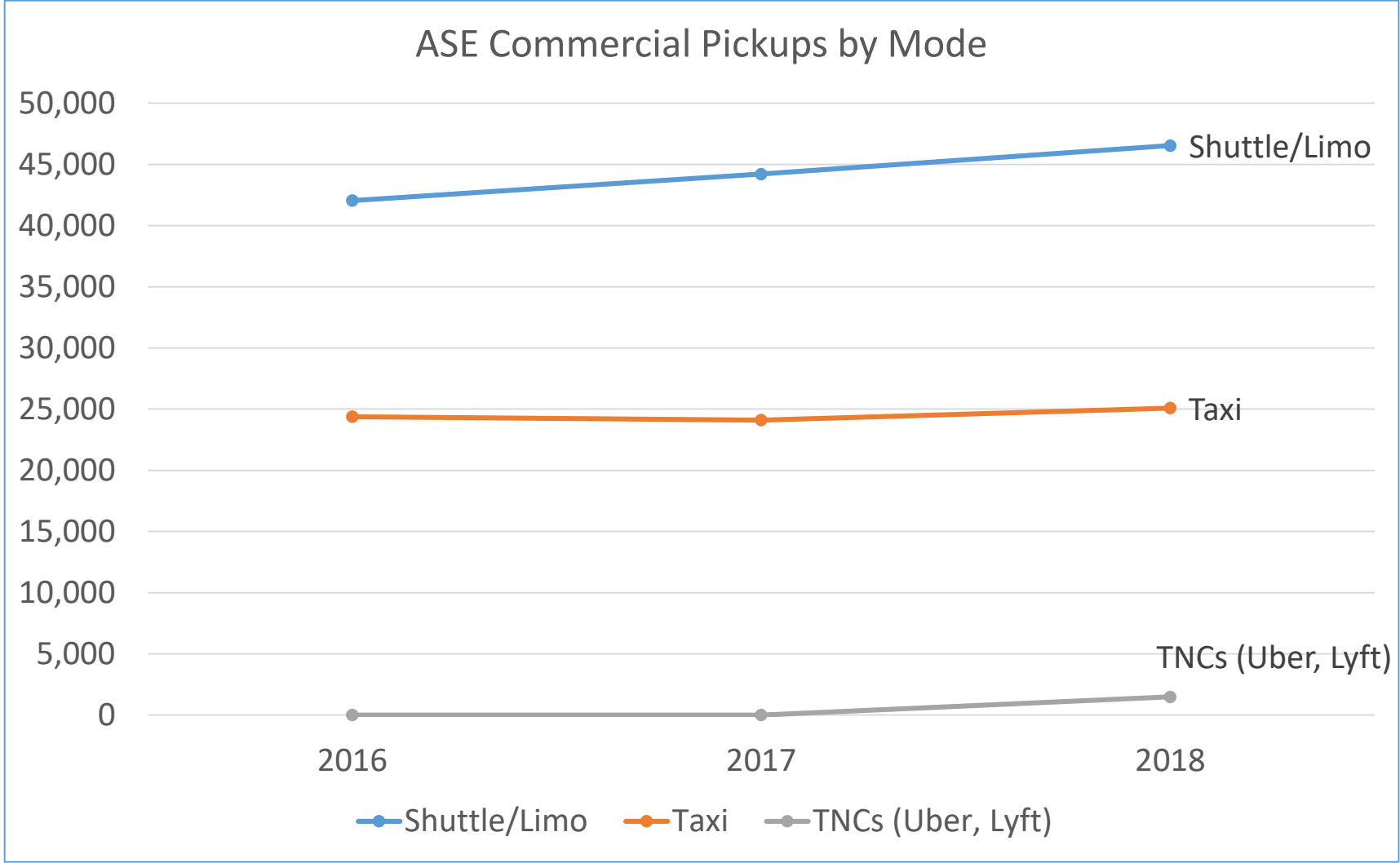
**approximate percentage of enplanements*

Summary of Ground Transportation Modes of Air Travelers



Focus Group

Ground Transportation Modes of Air Travelers



<u>2016</u>	<u>Total</u>	<u>%</u>
Taxis	24,387	36.7%
Shuttles/Limos	42,051	63.3%
Total	66,438	
<u>2017</u>	<u>Total</u>	<u>%</u>
Taxis	24,108	35.3%
Shuttles/Limos	44,216	64.7%
Total	68,324	
<u>2018</u>	<u>Total</u>	<u>%</u>
Taxis	25,087	34.3%
Lyft	154	0.21%
Uber	1,330	1.82%
Shuttles/Limos	46,536	63.6%
Total	73,107	
<u>2019 (Jan-Jun)</u>	<u>Total</u>	<u>%</u>
Taxis	13,053	29.8%
Lyft	1,027	2.34%
Uber	5,228	11.94%
Shuttles/Limos	24,493	55.9%
Total	43,801	

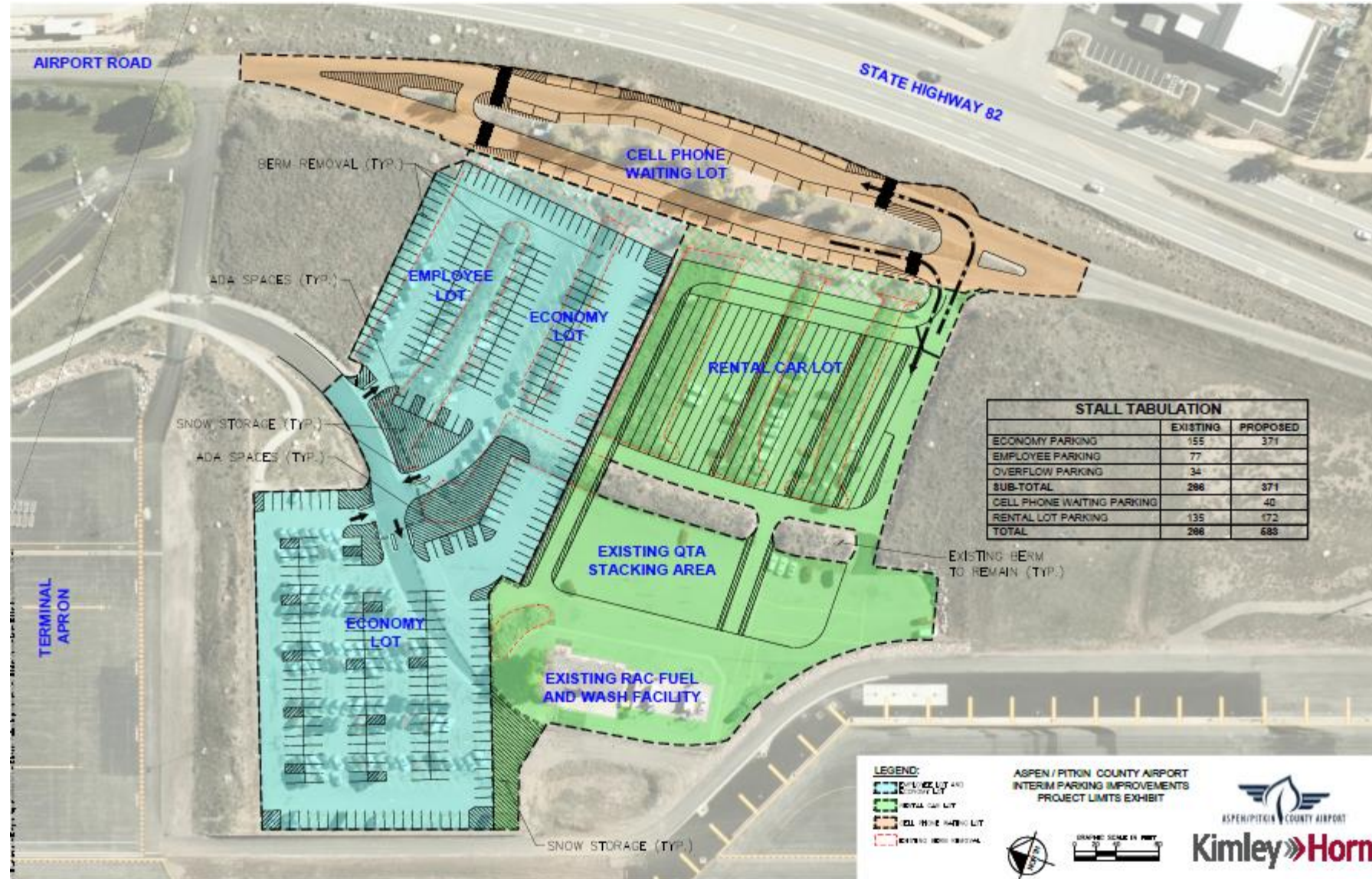
Auto Parking

ASE Auto Parking Capacity: Current Conditions

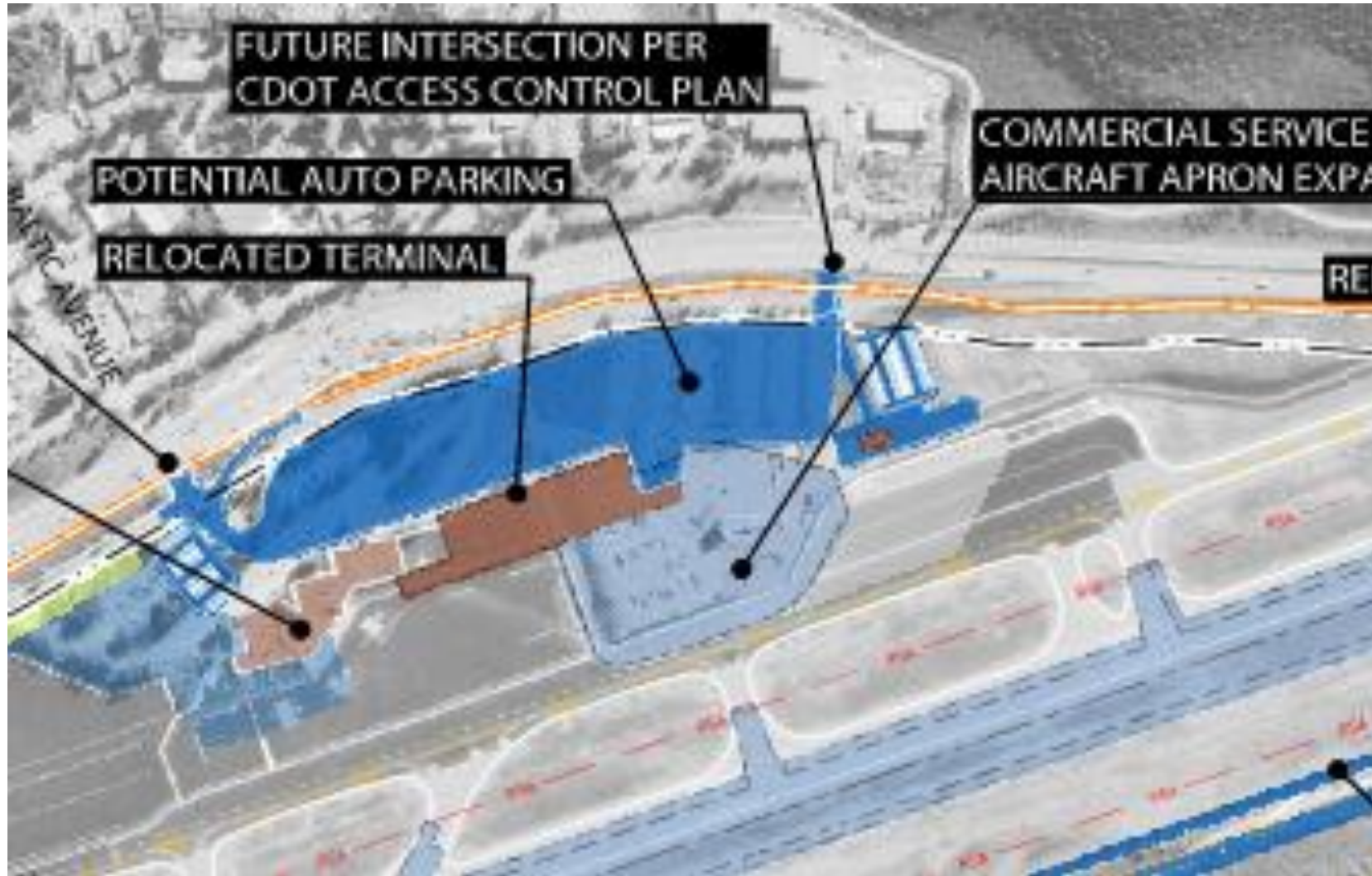
	Existing	With Short Term Improvements
Public Parking (Short and Long Term)	279	371
Employee Parking	160	160
Rental Car (Ready/Return)	61	61
Rental Car (Service/Storage)	180	172
Hotel Shuttles	24	24
Total	704	788

Focus Group

Recent ASE Parking Changes



2018 Environmental Assessment





Examples of Innovative Ground Transportation

Innovation in Ground Transportation

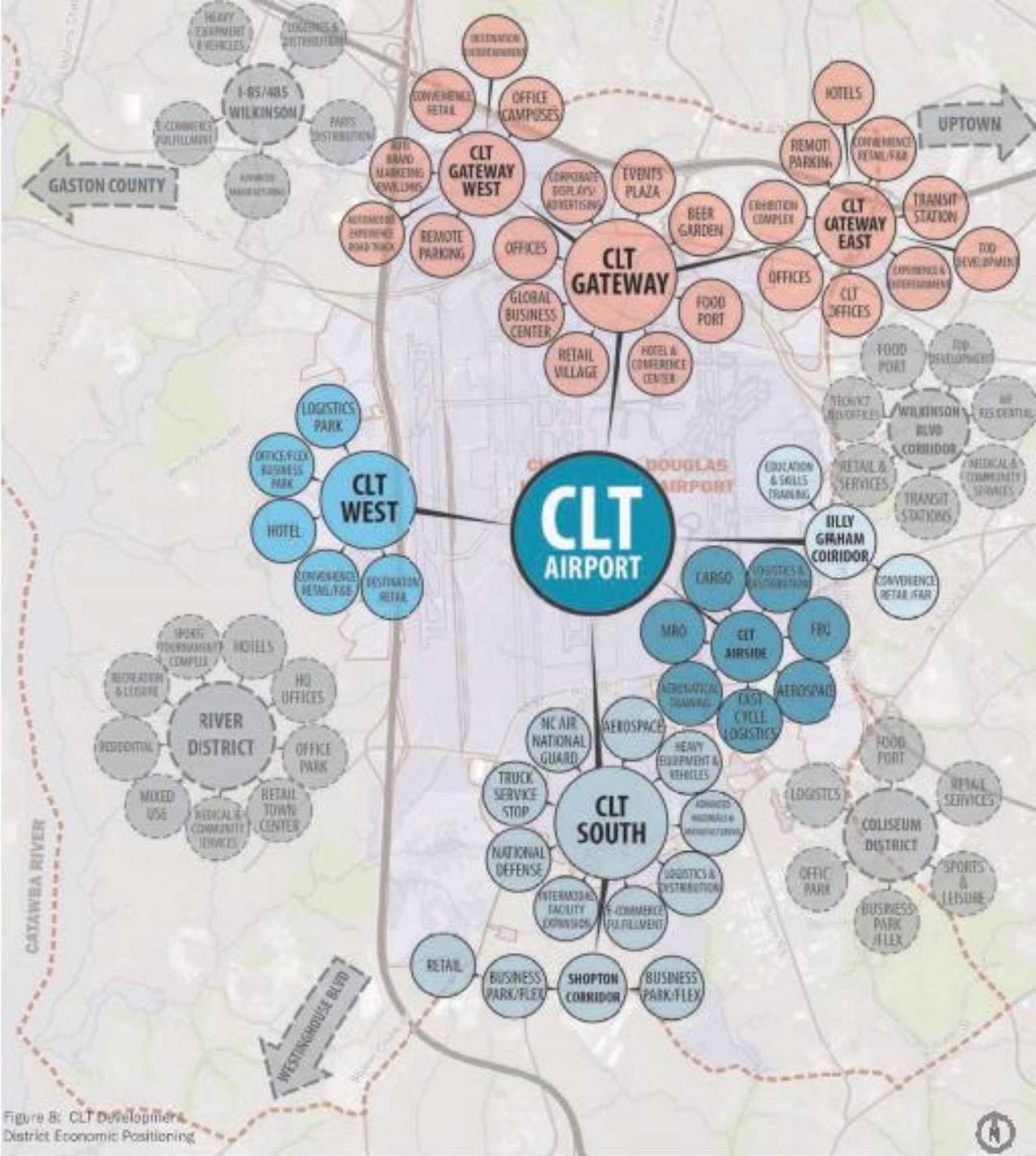
Trends and Disruptors

- TNCs (Lyft/Uber)
- Autonomous vehicles
- Managing demand through pricing
- Others (mass transit/parking)



Miami Intermodal Center

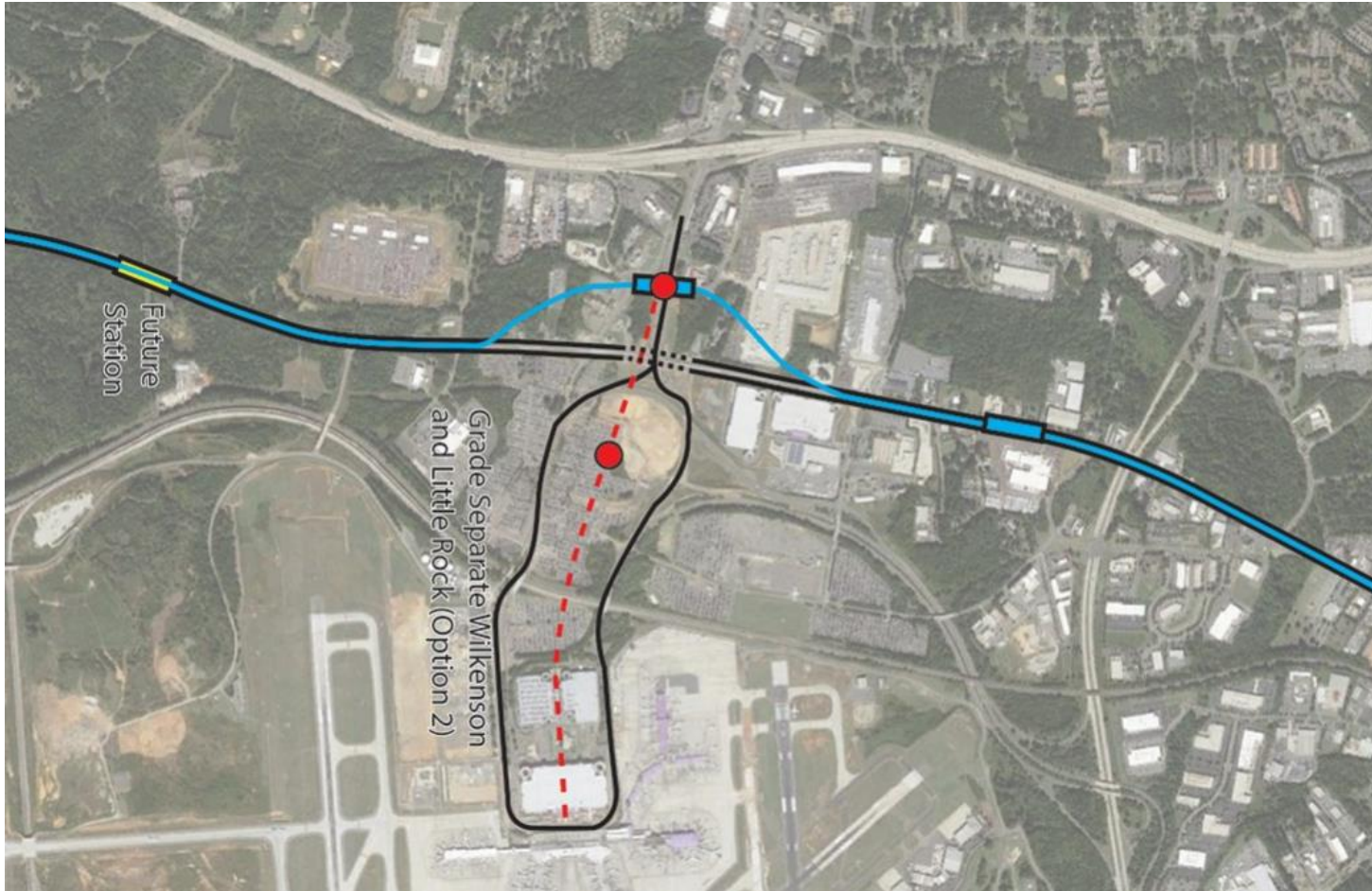
(example for illustrative purposes only)



Charlotte Airport Regional Plan
(example for illustrative purposes only)

Charlotte Airport Grade-Separated LRT

(example for illustrative purposes only)

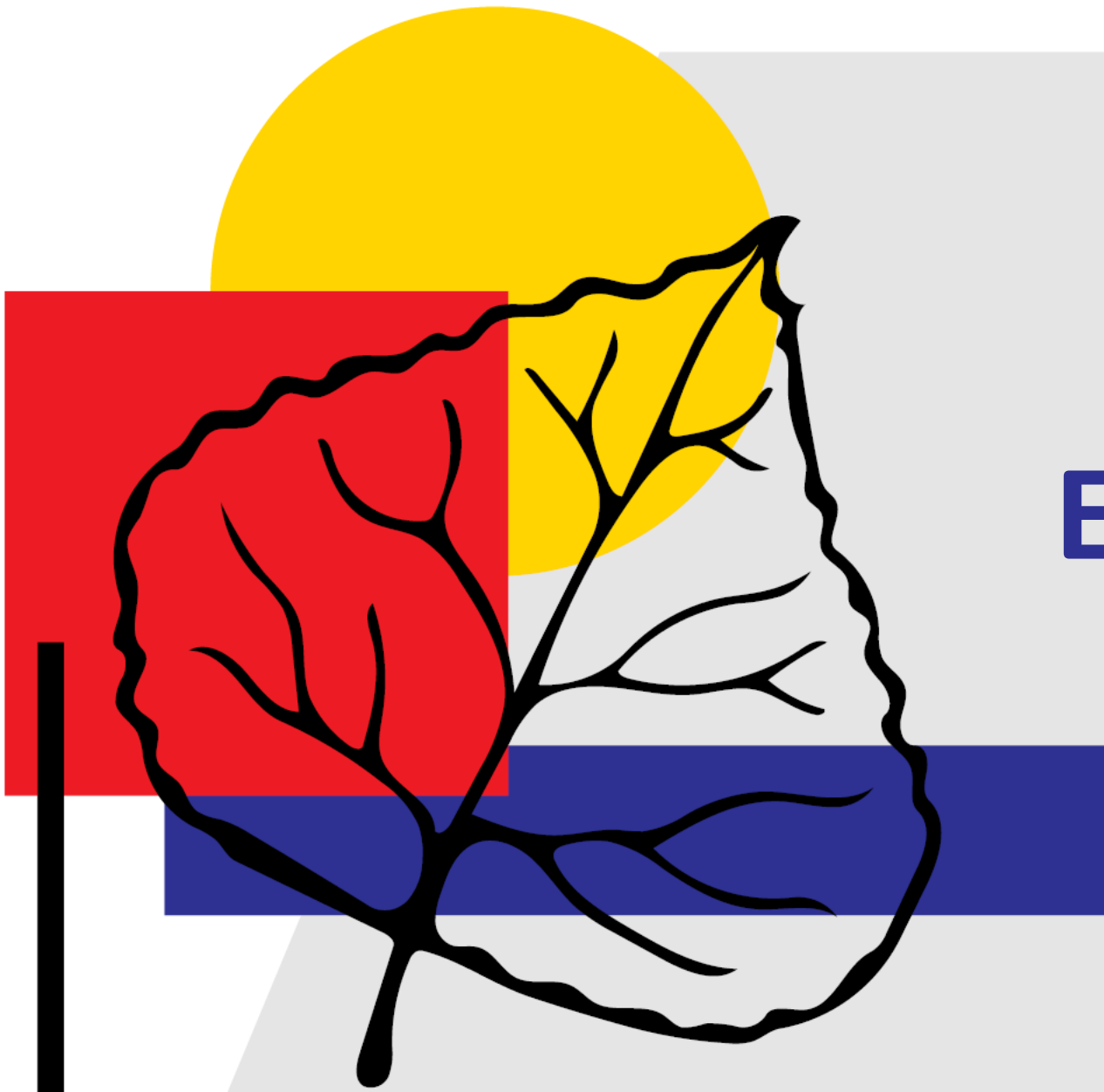




Burbank Intermodal Center Bob Hope Airport

(example for illustrative purposes only)

<https://airportimprovement.com/article/new-intermodal-center-bob-hope-airport-doubles-emergency-ops-center>



Prioritizing and Evaluating Ground Transportation Options

Evaluating Ground Transportation Options Based on ASE Vision Goals and Values

Sticky dot exercise #2:

- 1. Prioritize your top five mode options (5 blue dots)*
- 2. Select space allocation/sizing preferences (5 red dots)*

Evaluating Ground Transportation

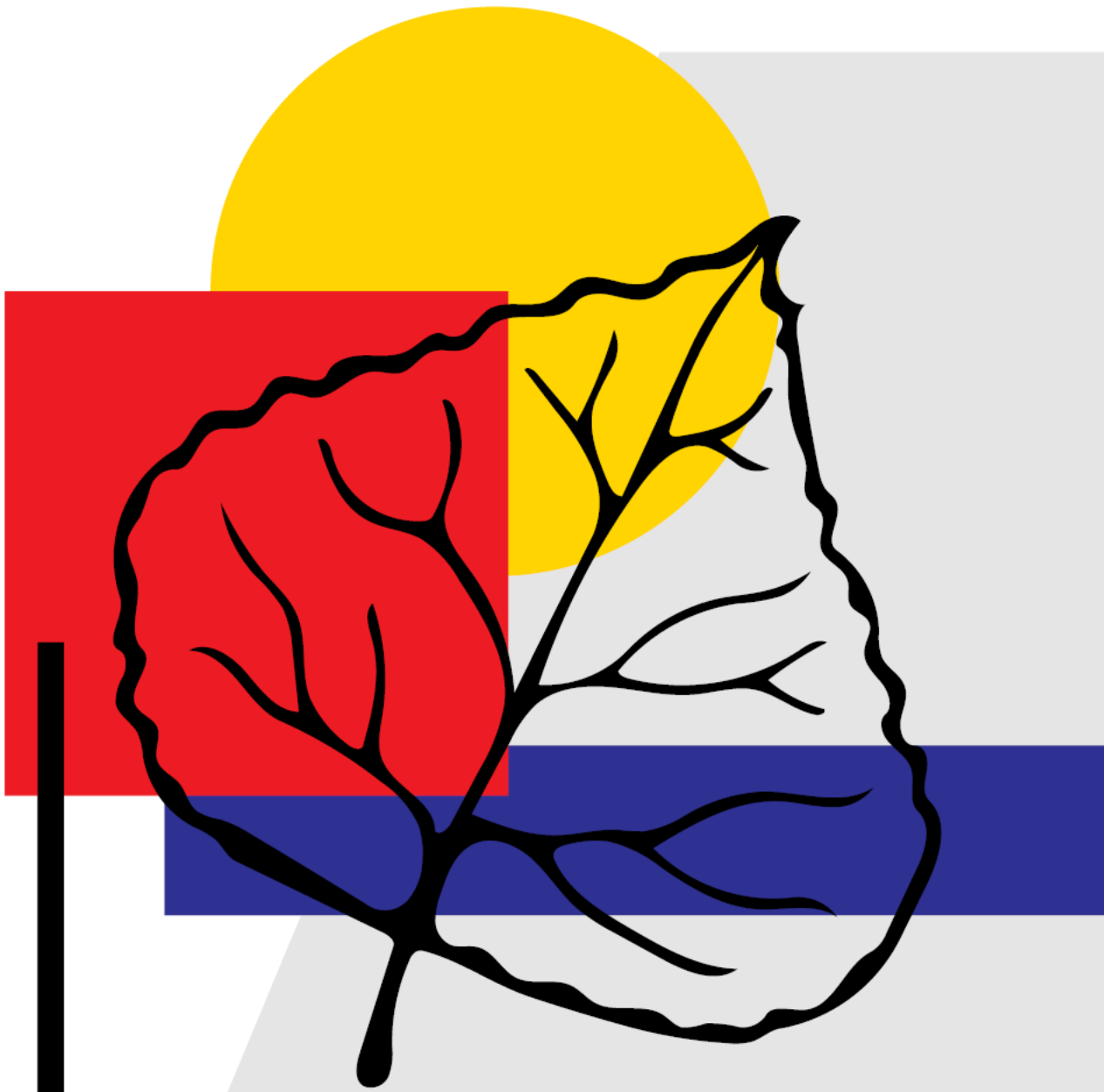
Mode	Priority	Space Allocation		
		Decrease	Maintain	Increase
Mass Transit: Bus Rapid Transit (BRT)				
Mass Transit: Airport Circulator				
Mass Transit: Light Rail Transit (LRT)				
Mass Transit: Gondola/Tramway				
Multi-Modal (ped/bike)				
Hotel Shuttles				
Ride Sharing (taxi/Lyft/Uber)				
Private Vehicles: Pick Up/Drop Off				
Personal Vehicles: Parking				
Rental Vehicles/Parking				

Evaluating Ground Transportation Options

Key takeaways:

1. What stands out? (i.e., themes, trends, outliers, tradeoffs)

- *Note: Potential implications for airport layout, implementation, revenue and funding will be explored during Meeting #3*



Next Steps

Upcoming Focus Group Meetings

- Establish next meeting dates:
 - **October 2** – Plenary + Focus Group Meeting #3 – Explore Airport/Transit Connectivity
 - **TBD: October 16** – Focus Group Meeting #4 – Align, Formalize and Vote on Recommendations